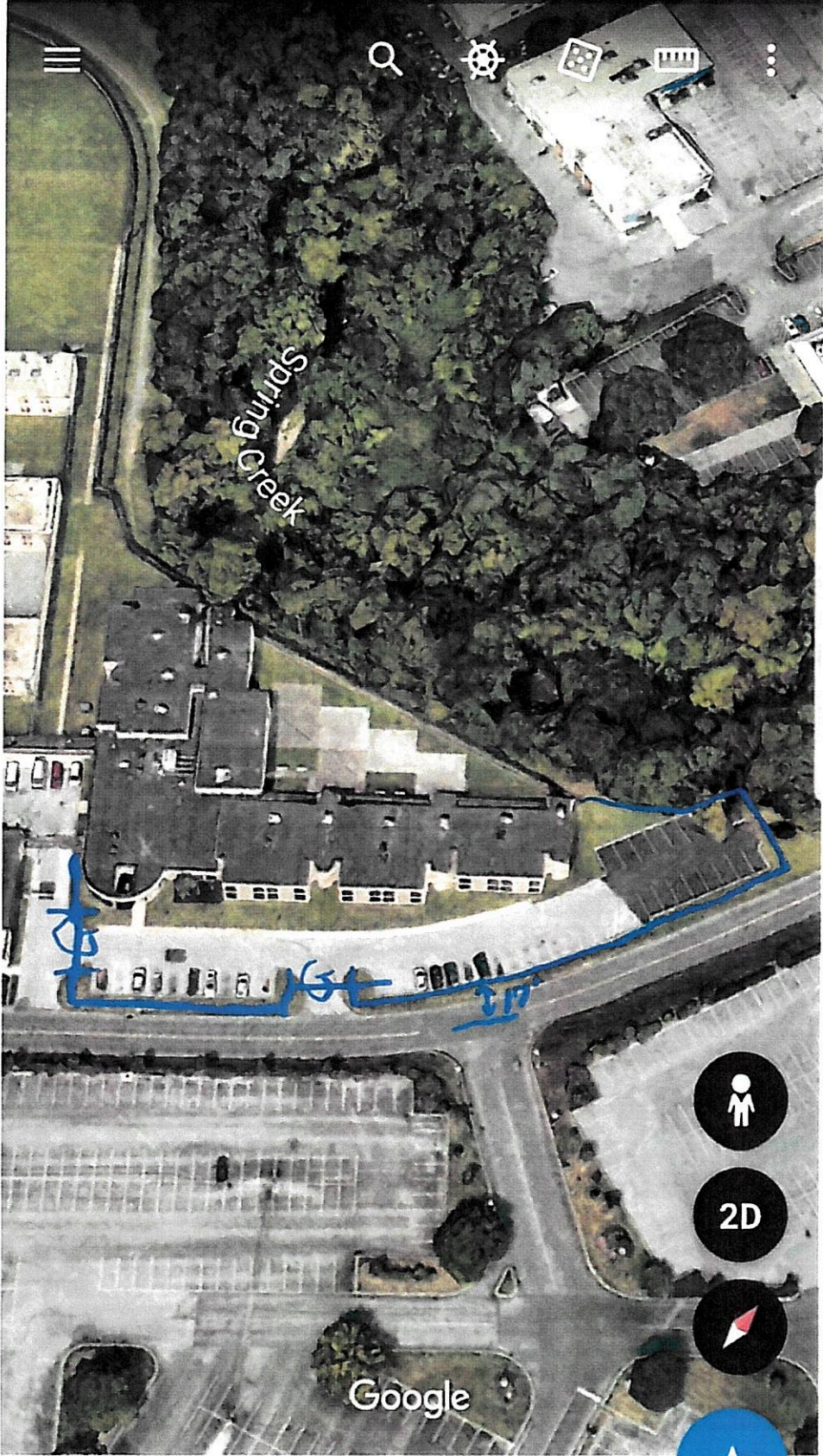


2:20 AT&T

5G E 68%



X 2 S 2nd St Harrisburg, PA 17101



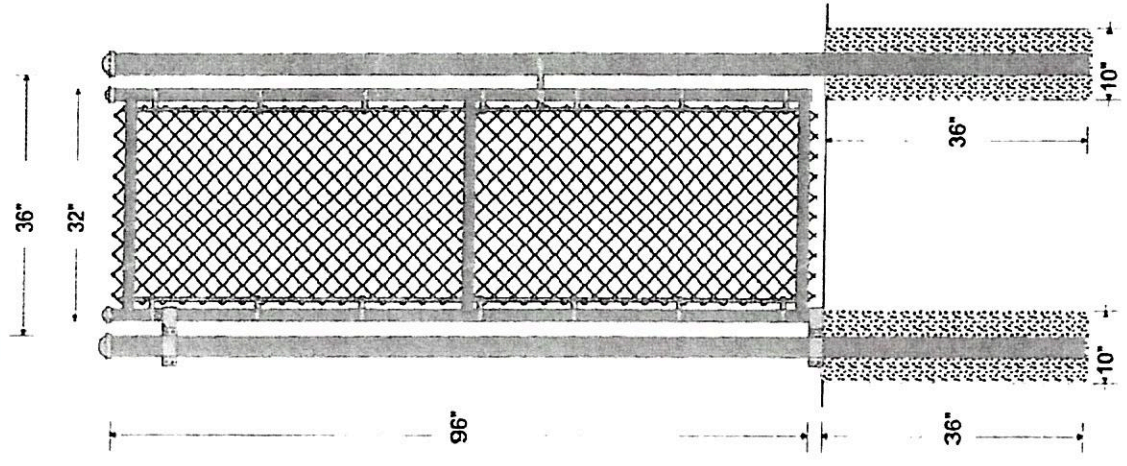


3' SINGLE GATE, 1 5/8" SS-40 PIPE FRAME

TYSON FENCE CO.
7921 GRAYSON ROAD
HARRISBURG, PA 17111
(717) 564-3116

Drawn: 09/21/2020
File:

Dauphin County prison
Mall Dr.
HARRISBURG, PA



FABRIC: 96" 9 GA. GALVANIZED (2" Mesh) CHAIN LINK FABRIC.
BRACING: Terminal posts braced and trussed to the nearest line post with 1 5/8" O.D. SS-40 PIPE and 3/8" TRUSS ROD & TRUSS ROD TIGHTENER, 1 5/8" O.D. SS-40 PIPE, 1.83 lbs. per foot, used for the bottom rail.

GATES: SINGLE SWING GATE: Framework of 1 5/8" SS-40 PIPE, 1.83 lbs. per foot.

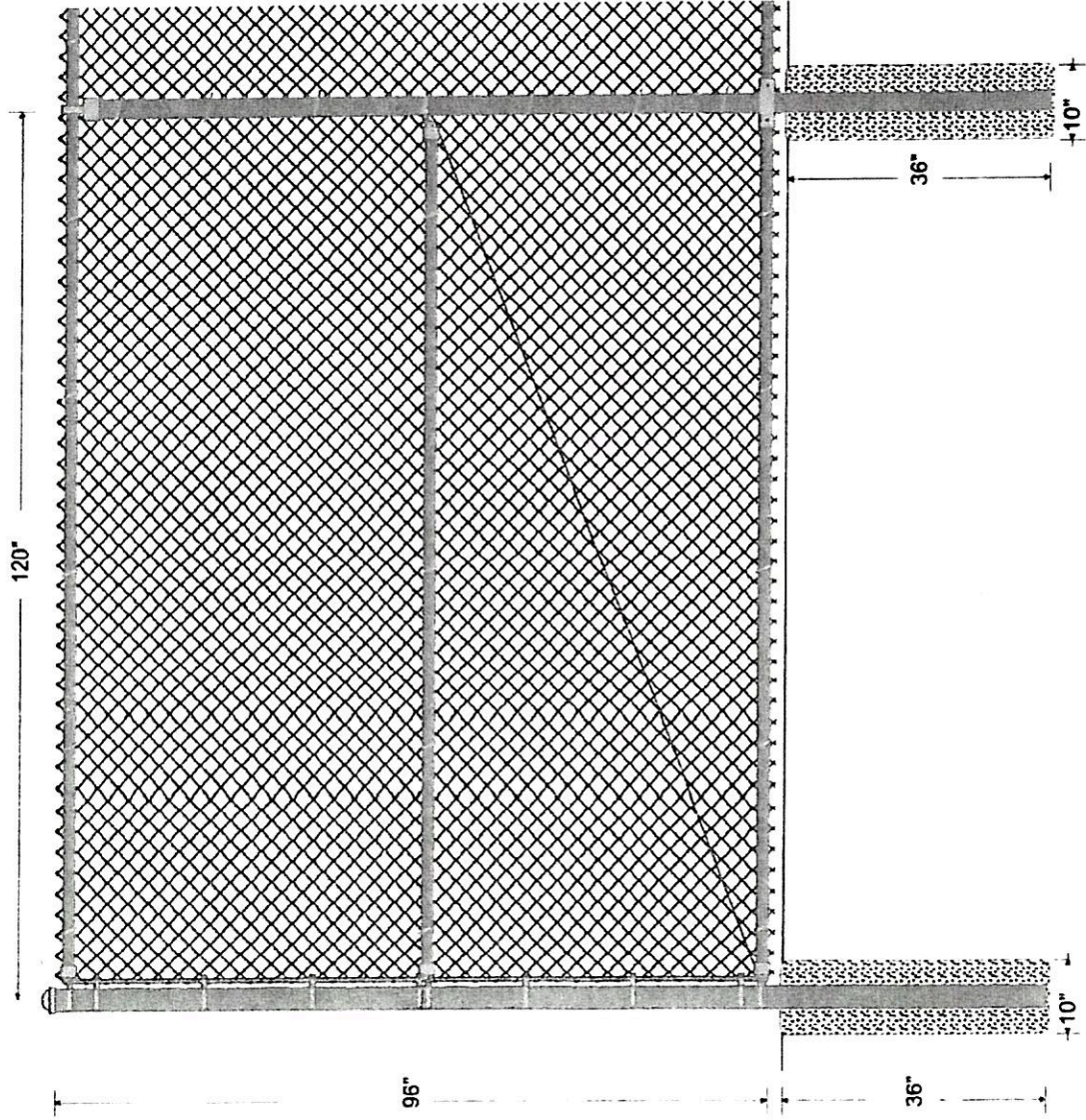
Gates braced and trussed as necessary. Same fabric as fence.

GATE POST: SINGLE SWING GATE: 3" O.D. SS-40 PIPE, 4.47 lbs. per foot. Concrete footing: 10" diameter, 36" depth.

FITTINGS: BEVELED BRACE BAND & CARRIAGE BOLT, DIE-CAST ALUMINUM RAIL-END, BOULEVARD CLAMP, DIE-CAST ALUMINUM EYE-TOP, DIE-CAST ALUMINUM DOME CAP, 3/16" X 3/4" TENSION BAR, BEVELED TENSION BAND & CARRIAGE BOLT.

TIE WIRE: 9 1/4" 9 GA. ALUMINUM TIE WIRE spaced 15" on center for line posts & 24" on center for rails.

POST FOOTING: TRUCK POURED CONCRETE.



FABRIC: 96" 9 GA. GALVANIZED (2" Mesh) CHAIN LINK FABRIC.

TOP RAIL: 1 5/8" O.D. SS-40 PIPE, 1.83 lbs. per foot. Top rail 21' in length, joined with 1 5/8" SLEEVE.

LINE POST: 2 1/2" O.D. SS-40 PIPE, 3.12 lbs. per foot. Line posts set 10' on center maximum spacing. Concrete footing: 10" diameter, 36" depth.

TERMINAL POST: 3" O.D. SS-40 PIPE, 4.47 lbs. per foot. Concrete footing: 10" diameter, 36" depth.

BRACING: Terminal posts braced and trussed to the nearest line post with 1 5/8" O.D. SS-40 PIPE and 3/8" TRUSS ROD & TRUSS ROD TIGHTENER, 1 5/8" O.D. SS-40 PIPE, 1.83 lbs. per foot, used for the bottom rail.

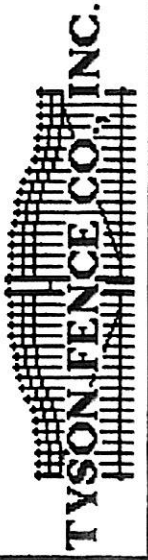
FITTINGS: BEVELED BRACE BAND & CARRIAGE BOLT, DIE-CAST ALUMINUM RAIL-END, BOULEVARD CLAMP, DIE-CAST ALUMINUM EYE-TOP, DIE-CAST ALUMINUM DOME CAP, 3/16" X 3/4" TENSION BAR, BEVELED TENSION BAND & CARRIAGE BOLT.

TIE WIRE: 6 1/4" 9 GA. ALUMINUM TIE WIRE spaced 15" on center for line posts & 24" on center for rails.

POST FOOTING: TRUCK Poured CONCRETE.

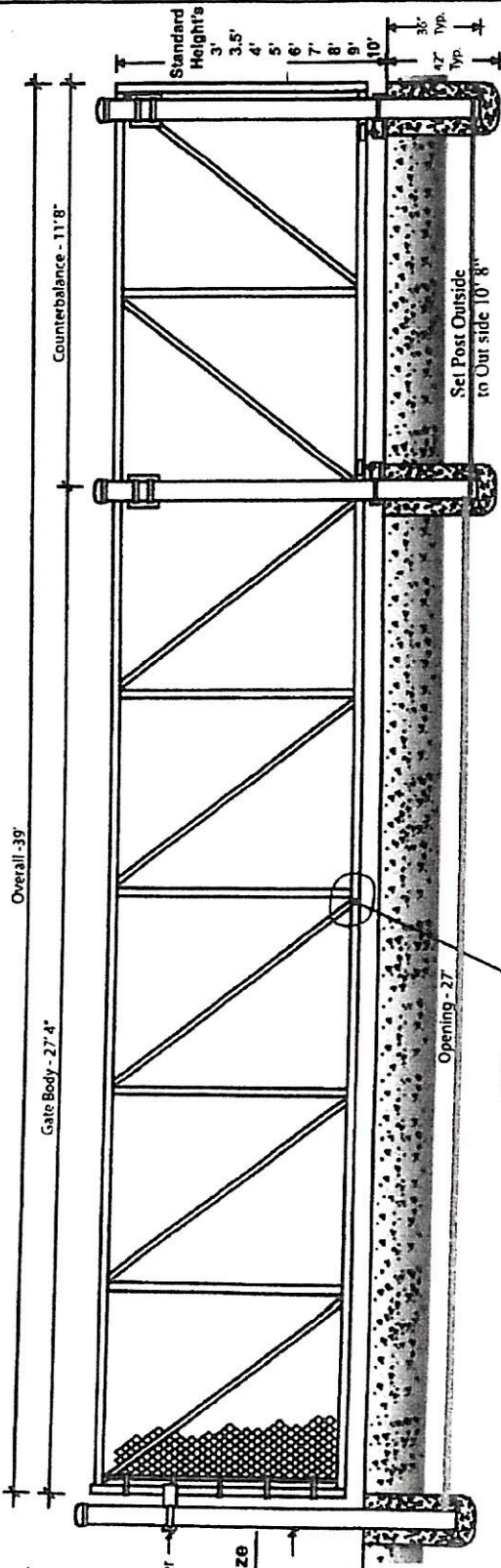
TYSON FENCE CO.
7921 GRAYSON ROAD
HARRISBURG, PA 17111
(717) 564-3116

Dauphin County prison
Mall Dr.
HARRISBURG, PA



LINE OF FENCE

Drawn: 09/21/2020
File:



Standard Post Size

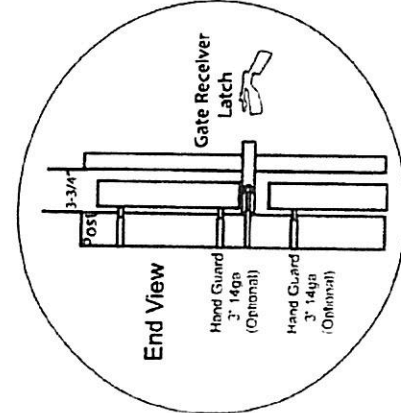
- 4"-Round
- 4"-SQ
- 6-5/8"-Round
- 6"-SQ



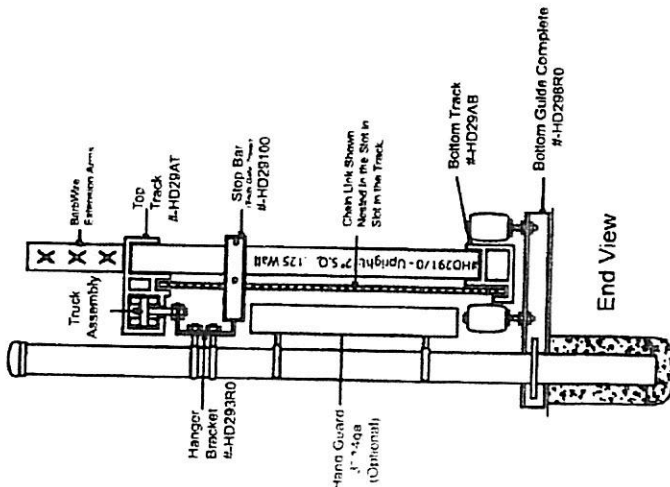
Gate Receiver Latch



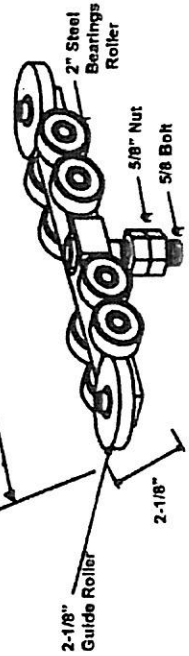
Fillet 3/8" Weld Typ.



End View



End View



Truck Assembly With sealed roller bearings #HD29500

Default Specifications	Weight by Ft
#HD29170 - Uprights: 2" S.Q. .125 Wall	1.126
#HD29120 - Diagonals: 1-1/4" S.Q. .125 Wall	0.674
#HD29AT - Top Track: 9-1/2" x 3-1/4"	5.213
#HD29AB - Bottom Track: 3-1/4" x 3-1/4"	2.85

All Material 6061-T6 Extruded

Bracing will be added as Required Distance +/-



Revised - Robert Curry 11-2019

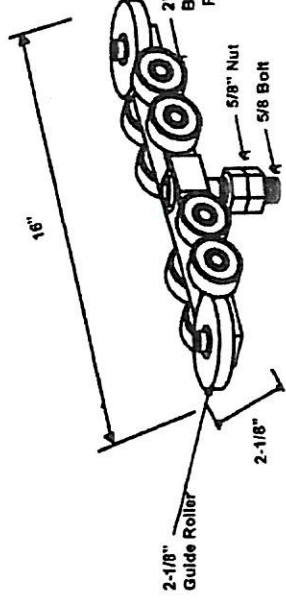
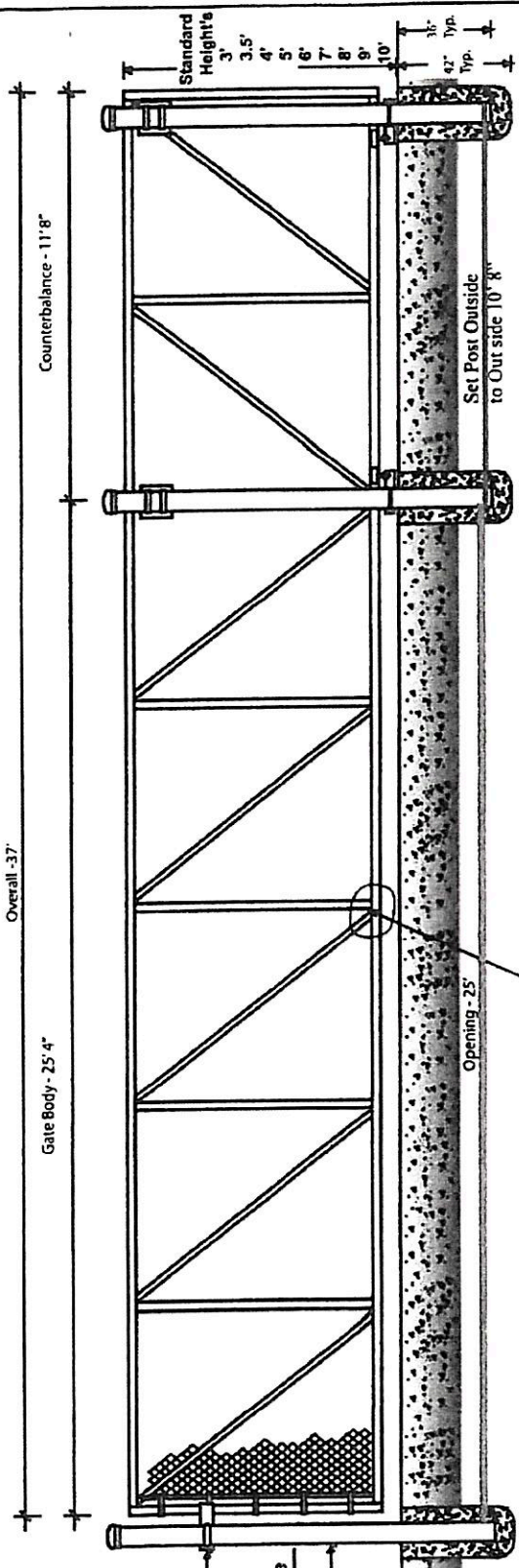
Project: **SPS OnGuard 27' Aluminum Slide Gate**

Approved By: _____ Date: _____

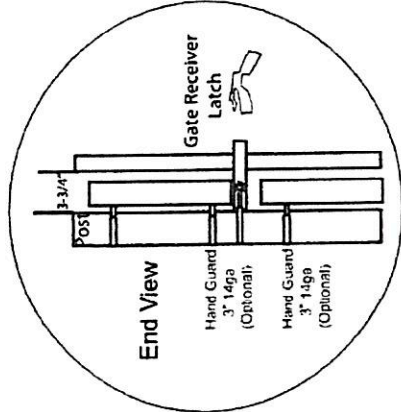
Drawn By: **Joe Little**

Drawing NO: **SPS-OG-27-ASG**

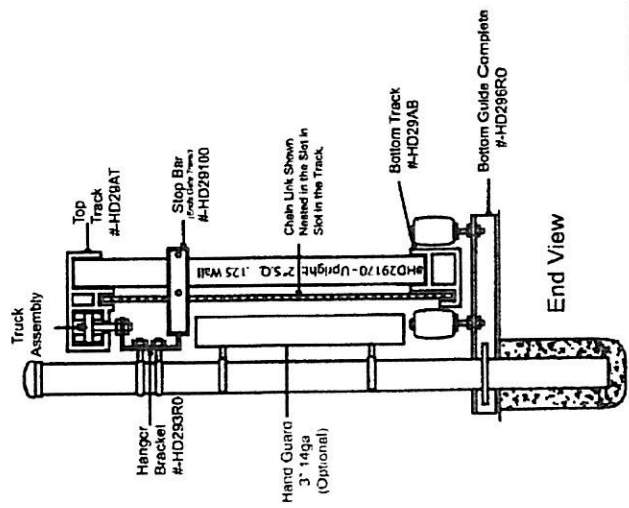
OnGuard Aluminum Fence Systems



Truck Assembly
With sealed roller bearings
#-HD29500



Bracing will be added as Required
Distance +/-



Default Specifications	Weight by Ft
#HD29170 - Uprights: 2" S.Q. .125 Wall	1.126
#HD29120 - Diagonals: 1-1/4" S.Q. .125 Wall	0.674
#HD29AT - Top Track: 9-1/2" x 3-1/4"	5.213
#HD29AB - Bottom Track: 3-1/4" x 3-1/4"	2.85

All Material 6061-T6 Extruded

Project:

SPS OnGuard 25' Aluminum Slide Gate

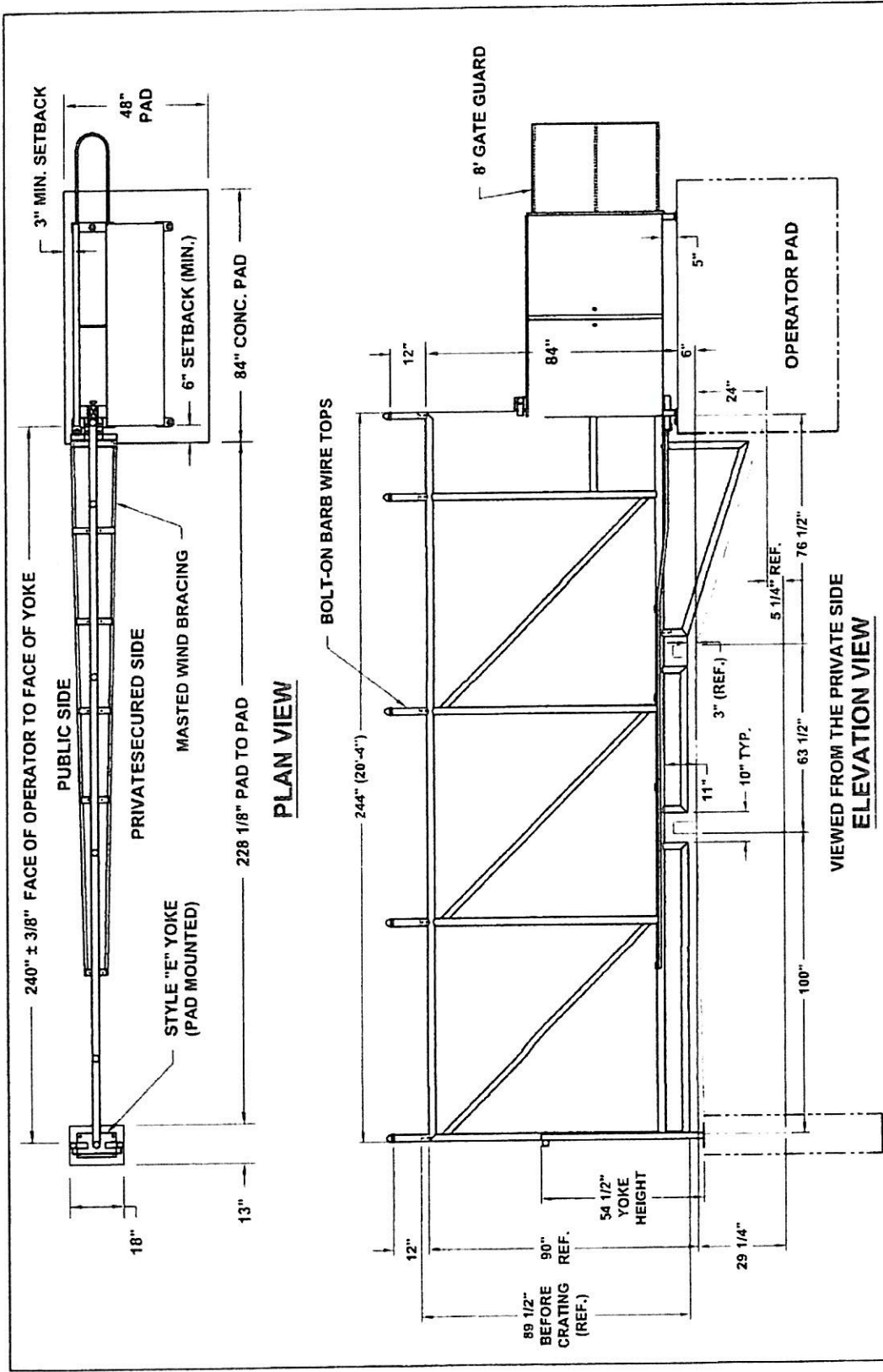
Approved By: _____ Drawing NO. SPS-OG-25-ASG

OnGuard Aluminum Fence Systems

Revised - Robert Curry 11-2019

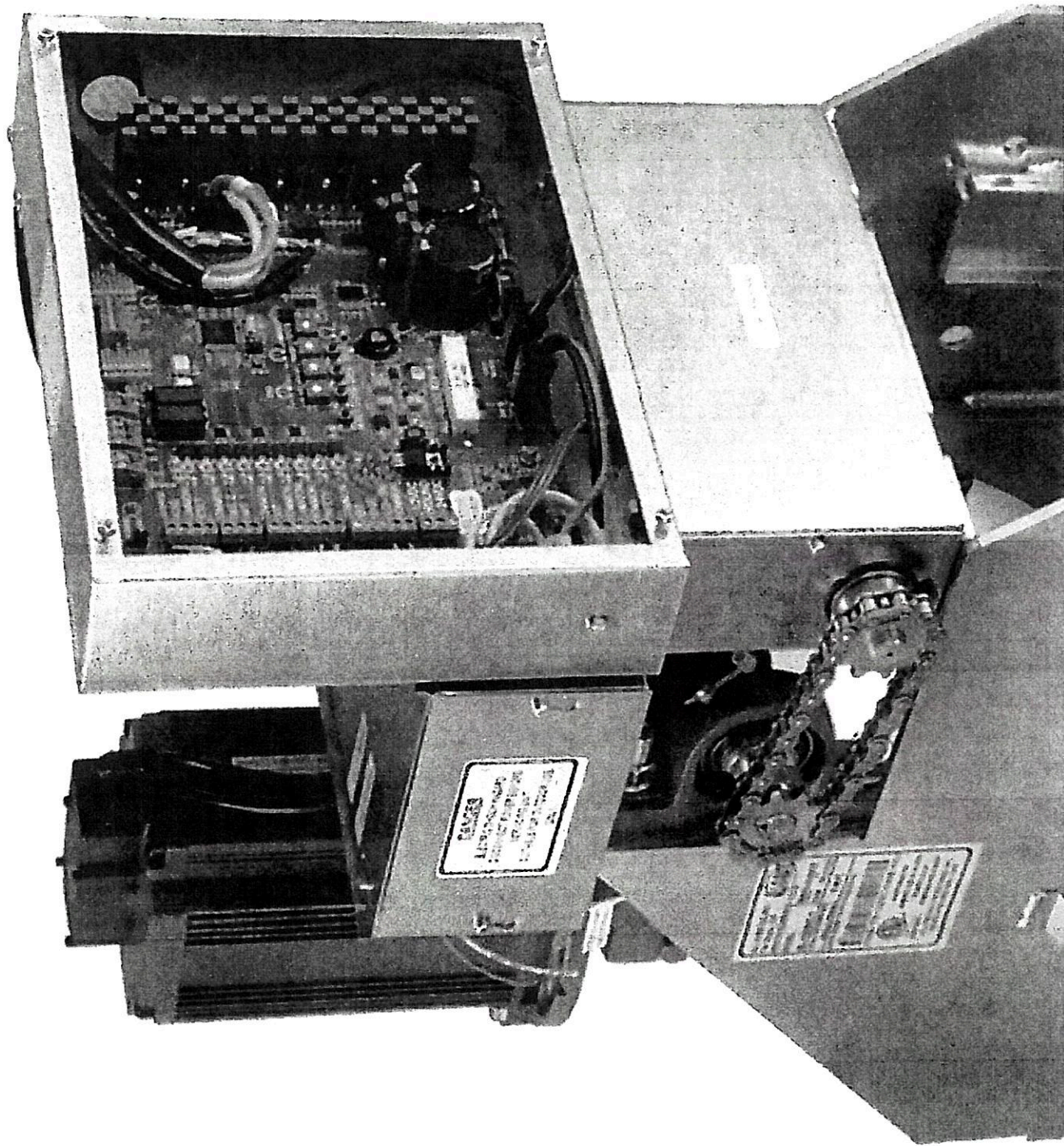


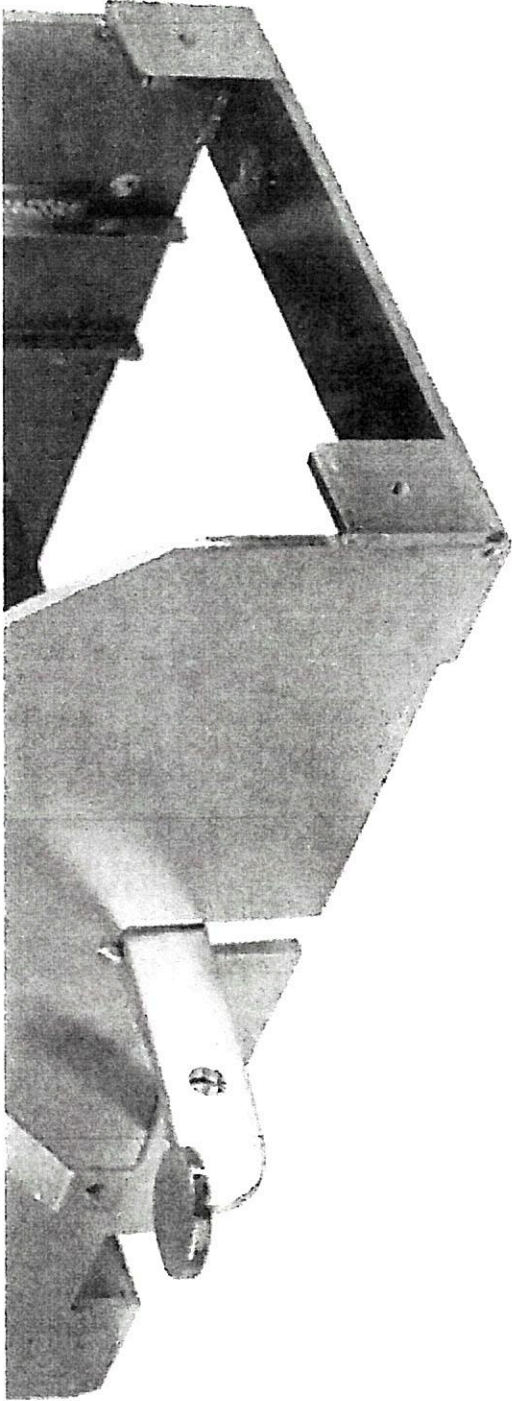
* Not correct size gate, just to show design



<p>NOTICE THE INFORMATION CONTAINED ON THIS DOCUMENT IS UNCLASSIFIED EXCEPT WHERE INDICATED OTHERWISE AND THIS INFORMATION IS PUBLICLY AVAILABLE UNLESS OTHERWISE SPECIFIED OTHERWISE IN THIS DOCUMENT DATE 8-1-02 BY 301 JCS/S.015</p>		<p>Date: 01/19/15 Dr. By: M.S. Chd. By: B.F. Dwg.: Rail Road Tracks Crossing Title: Chainlink "300" VPL (12' x 7' + 1') R/H</p>
<p>Rev. No.:</p>	<p>Revisions:</p>	<p>AutoGate Gate Entry Systems Each height. One Pad (17) 125-3116</p>
<p>Scale:</p>	<p>Date:</p>	<p>AG</p>
<p>Scale:</p>	<p>Date:</p>	<p>AG</p>

REF.: CROSSROADS





SL-150 DC Slide Gate Operator

The SL-150DC was designed to meet the demands of gate installers who want a gate operator that can handle heavy traffic, commercial/industrial heavy gates and/or extreme weather conditions. The combination of its heavy duty frame, reliable gearbox and powerful brushless DC motor make even the most challenging installations simple and easy. The SL-150DC has the option of 1/2 HP and 1HP motors capable of moving up to 3,000 lb. and 4,000 lb. gates, respectively.

DC operators are equipped with a control board that offers an array of features that include a programmable relay and leaf delay, slow start/stop algorithm, and solar power capability. The integrated battery backup offers up to two weeks of uninterrupted operation in the event of a power outage. The brushless DC motors are smooth and quiet but are powerful and durable and require zero maintenance. As with most of our AC operators, our DC operators now include an emergency foot pedal release and a built in loop rack.

For more information contact us or your local distributor.

Architects & Specifier Files:



[Download Brochure](#)

[Download Manual](#)

[Descargar Manual](#)

SL-150 DC Slider Specs

[Download Brochure](#)

[Download Manual](#)

[Descarga Manual](#)

UL 325 2018 Compliant

Max Gate Weight

½ HP: 3,000 lbs.

1 HP: 4,000 lbs.

Max Gate Length

60 feet

Warranty

7 year residential - 5 year commercial

Motor

24 VDC brushless – ½ HP and 1 HP motor

Gate Speed

12" per second

Power Options

115/230 VAC single phase and 24 VDC solar panel

Duty Cycle

Continuous

Battery Back Up

Integrated, with (2) 7Ah 12VDC batteries

Battery Back Up Capacity

100 cycles on a 1,000 lb. gate

Temperature Range

-40 to 160°

Gearbox Ratio

30:1 with internal clutch

Width X Length X Height

15" X 19.5" X 25"

Shipping Weight

150 lbs.

Emergency Release

Mechanical foot pedal release

Belt Size

N/A

Main Sprocket Size

41B22X1

Chain Size

40NP (20' included)

Gearbox Sprocket

40B22X1

Limit Shaft Sprocket

41B10X5/8

Breaker Requirement

20 amp dedicated

Gearbox Pulley

N/A

Motor Pulley

N/A

SL-150 DC Slider – Warranty

MANUFACTURER'S LIMITED WARRANTY

The Warrantor warrants All SL-100, SL-150, OH-200, SW300 and SW350 Gate Operators. ALL-O-MATIC INC warrants its gate openers for a period of five (5) years in commercial installations, and for a period of seven (7) years in residential installation to be free from defects in circuitry, motor, gear box and workmanship. This warranty applies from the date of purchase to the original owner. Warrantor will repair or, at its option, replace any device which it finds to require service. This device must be sent to the warrantor at the consumer's expense. The warrantor will return the repaired or replaced unit to the customer at the consumer's expense. Labor charges for dealer service or replacement are the responsibility of the owner. These warranties are in lieu of all other warranties either expressed or implied, and ALL-O-MATIC INC shall not be liable for consequential damage. All implied warranties of merchantability and or fitness for a particular purpose are hereby disclaimed and excluded. This limitation is not valid in jurisdictions which do not allow limitation of incidental or consequential damages or limitation of warranty periods. Caution in order to obtain this policy, please complete the registration card and send it by mail within 30 days of purchasing from ALL-O-MATIC INC. or your INSTALLER. If not registered only a one year warranty on all parts will be provided.

SL-150AC & DC FOOTPRINTS